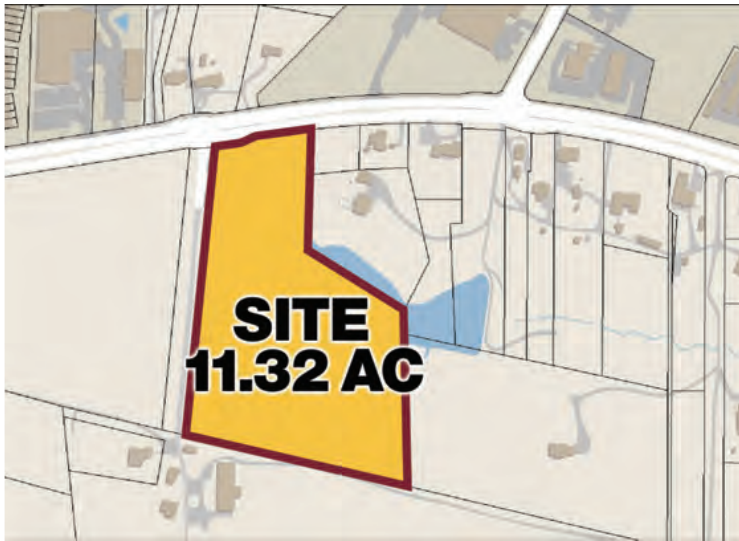


HRI

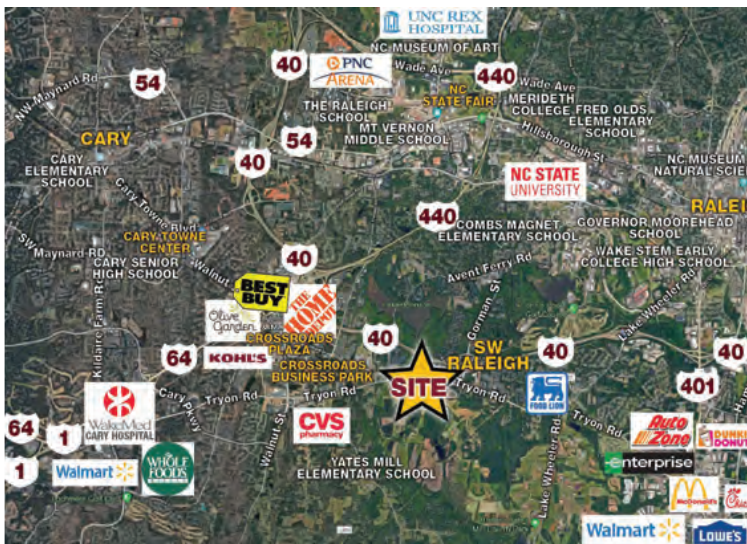
HARTWELL REALTY
INCORPORATED

FOR LEASE OR SALE
±11.32 AC WITH 8464 SF BUILDING



PROPERTY FEATURES

- Minutes from I-40, 440, NCSU, Public Schools, & Major Employment this 8464 Sf Building is highly desirable with 11.32 AC. It is located along the busy Tryon Rd which is considered to be the “Path of Progress”.
- This is a business with an excellent reputation and their current client list is available. It is a turn key operation with FFE.
- Centers & Area Support Services - NDA Required for Additional Details & Pricing
- Call Broker for Pricing and Additional Information
- **Brenda H. Compton**
The Compton Team at
HARTWELL REALTY, INC.
919-522-5834 Direct
919-772-0170 x 2 Office
bcompton@hartwellrealty.net
www.hartwellrealty.net
- **Megan Pumarejo**
The Compton Team at
HARTWELL REALTY, INC.
512-230-5193 Direct
919-772-0170 x6 Office
mpumarejo@hartwellrealty.net
www.hartwellrealty.net



The information contained herein has been obtained from sources deemed reliable; however, Hartwell Realty, Inc. makes no guarantees, representations or warranties, as to the completeness or accuracy thereof. The presentation of this property is submitted subject to errors, omission and changes of price or conditions prior to sale or lease of the property. The property is subject to withdrawal without notice. It is the responsibility of the prospective Buyer(s), Tenant(s) or Investor(s) to verify the information contained herein.