

HIGH PROFILE ±14.91 ACRES FOR SALE

On Rand Road and Highway 50/Benson Road in Garner, NC

PROPERTY FEATURES

- Zoned Community Retail (CR) Town of Garner
- Public Utility Access
- Centrally Located along the Major Hwy 50 (Benson Rd) Traffic Collector Corridor
- Nicely Shaped Property With Good Topo
- Within Major Residential Growth Area of So. Wake Co.
- Best Uses: Community Retail/Commercial W/ Possible Dense Residential Mixed Use
- Within Minutes of Future 540
- Call Broker For More Info & Lot Pricing

LAND FOR SALE

THE COMPTON TEAM

Brenda H. Compton

(919) 522-5834 *mobile* ▪ (919) 772-0170 x 2 *office*
 BCompton@HartwellRealty.net

Megan A. Pumarejo

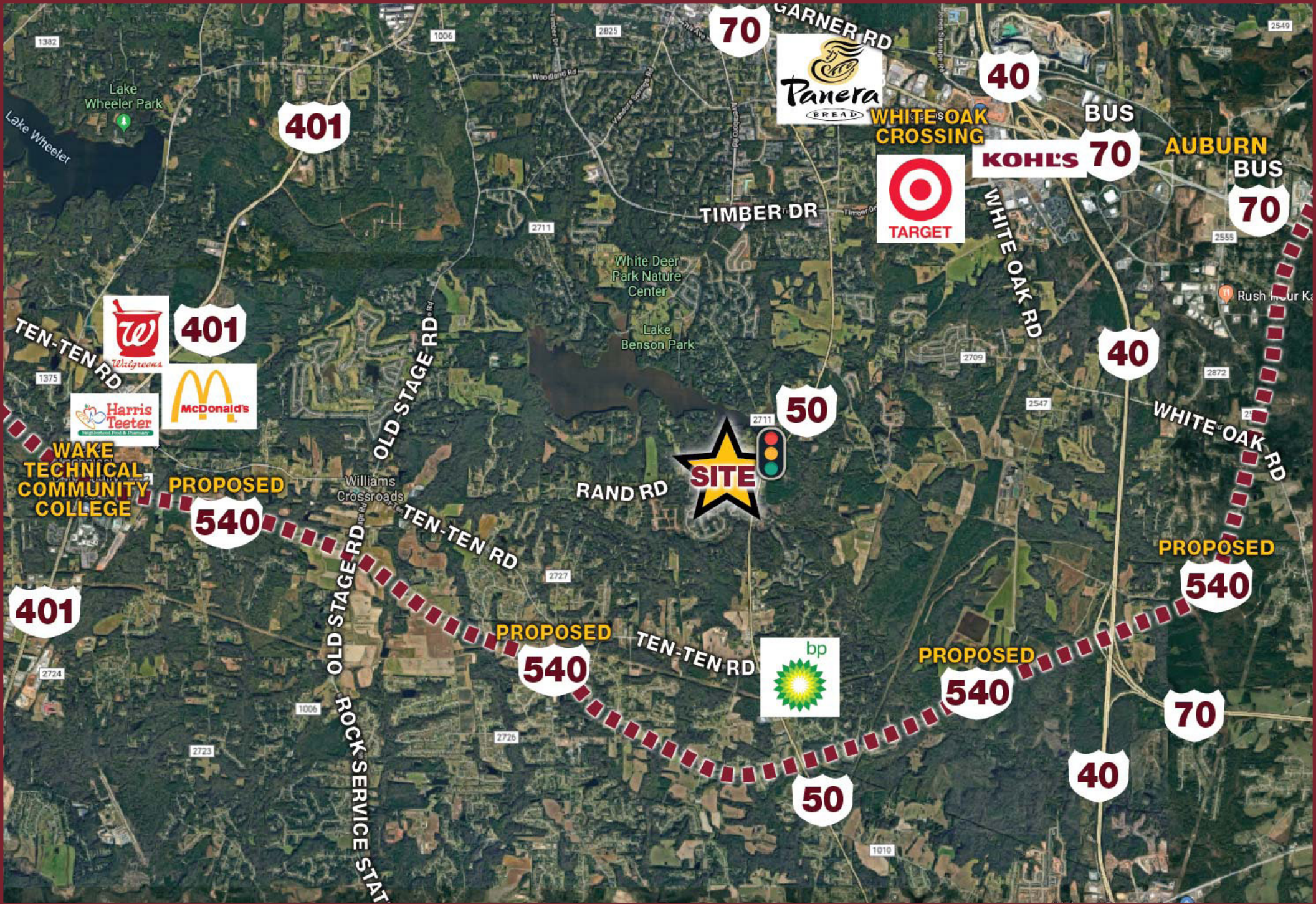
(512) 230-5193 *mobile* ▪ (919) 772-0170 x 106 *office*
 MPumarejo@HartwellRealty.net



HRI HARTWELL REALTY
 INCORPORATED

Hartwell Plaza, 1027 Hwy 70 W Garner, NC 27529
 www.HartwellRealty.net ▪ (919) 772-0170

The information contained herein has been obtained from sources deemed reliable; however, Hartwell Realty, Inc. makes no guarantees, representations or warranties, as to the completeness or accuracy thereof. The presentation of this property is submitted subject to errors, omission and changes of price or conditions prior to sale or lease of the property. The property is subject to withdrawal without notice. It is the responsibility of the prospective Buyer(s), Tenant(s) or Investor(s) to verify the information contained herein.



High Profile ±14.91 Acres for Sale
 On Rand Road and Highway 50/Benson Road in Garner, NC

HRI HARTWELL REALTY
 INCORPORATED

www.HartwellRealty.net ■ (919) 772-0170